



## Connecting the MOXA WLAN module Nport 2150 to your network



Release date: 10-04-2018

## Inhoud

Search the Moxa module with DSU.....	3
Connect the Moxa module using a LAN Cable .....	4
Search Ip address from Moxa module in TP-Link.....	5
Setup the Moxa module to the company network.....	6

## Search the Moxa module with DSU

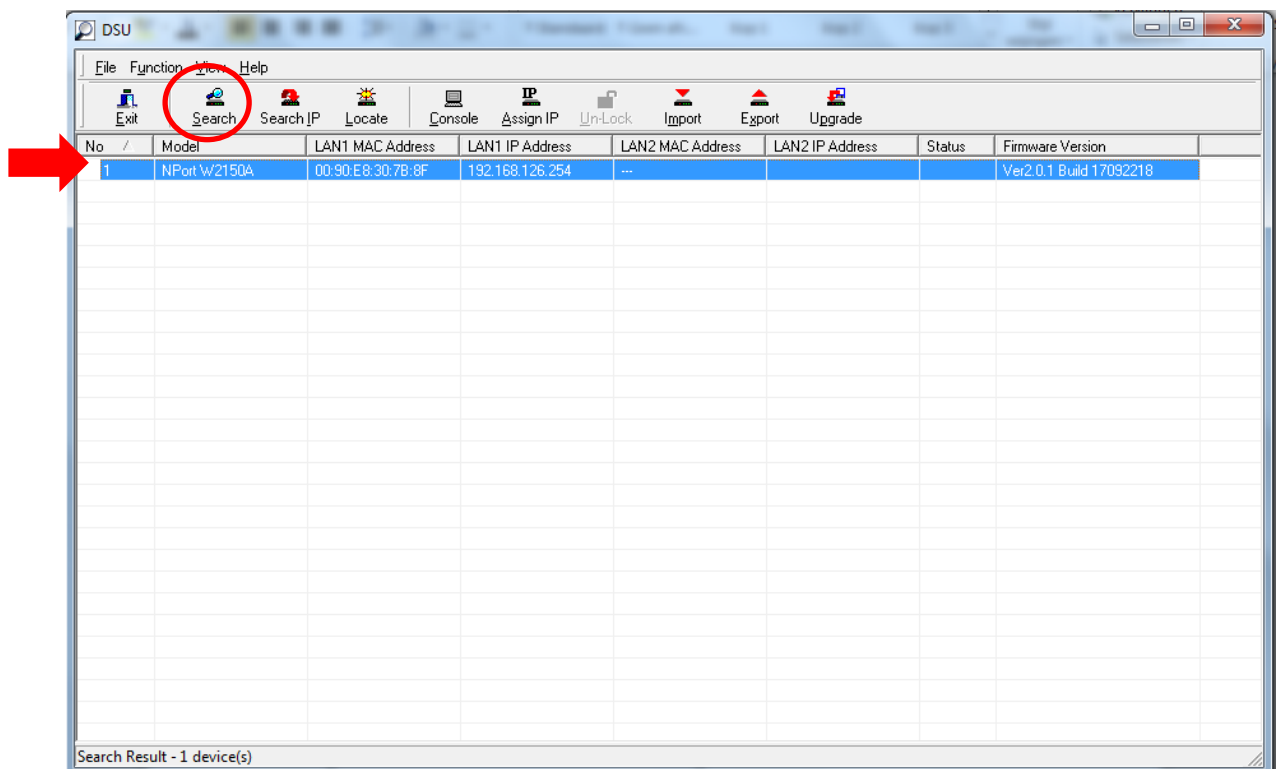
DSU (Device Search Utility) is used to find the Moxa module in your network. This is the most simple way to enter the utility web browser.

Before we start, make sure that the module has been turned off.

- Insert the LAN cable in the MOXA module and a pc.
- Turn on the Moxa module and wait till it is powered up
- Start the program “DSU”
- Click the “search” button in the top tool bar.

The program will look for every Moxa module in the network and will show the connected devices

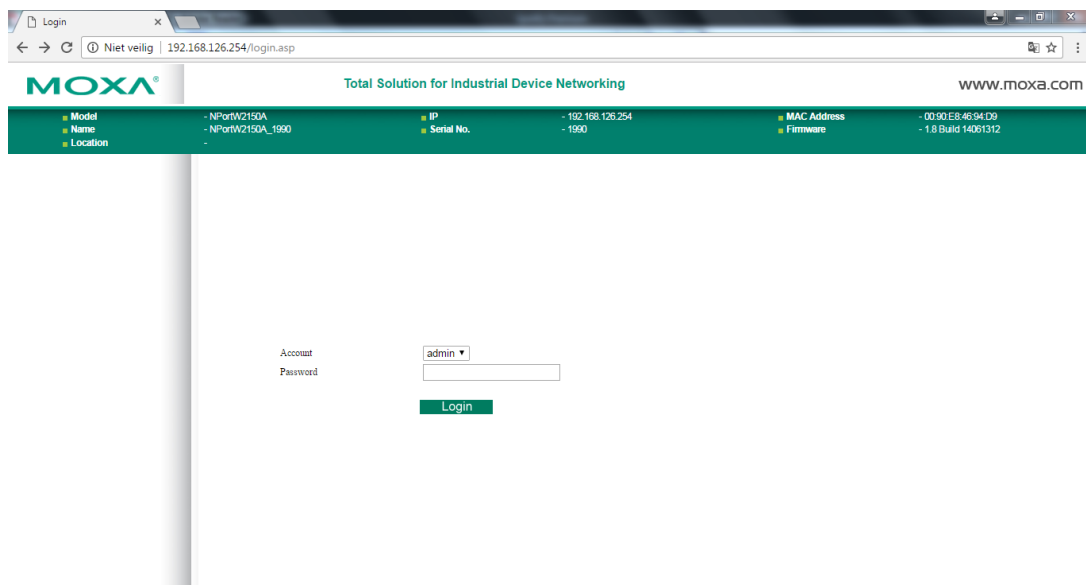
- Double click the correct module in the list to go to the setup web page
- Continue at page 6.



# Connect the Moxa module using a LAN Cable

Before we start, make sure that the module has been turned off.

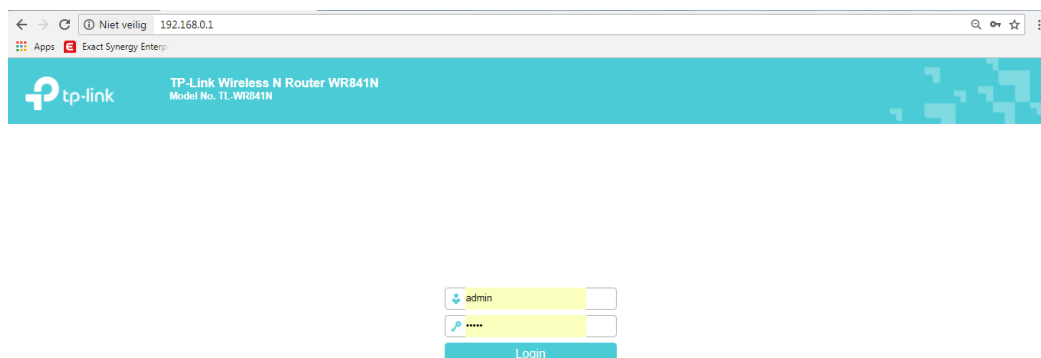
- Insert the LAN cable in the MOXA module and a pc.
- Turn on the Moxa module and wait till it is powered up
- Open a web browser and navigate to <http://192.168.126.254>



- Continue at page 5

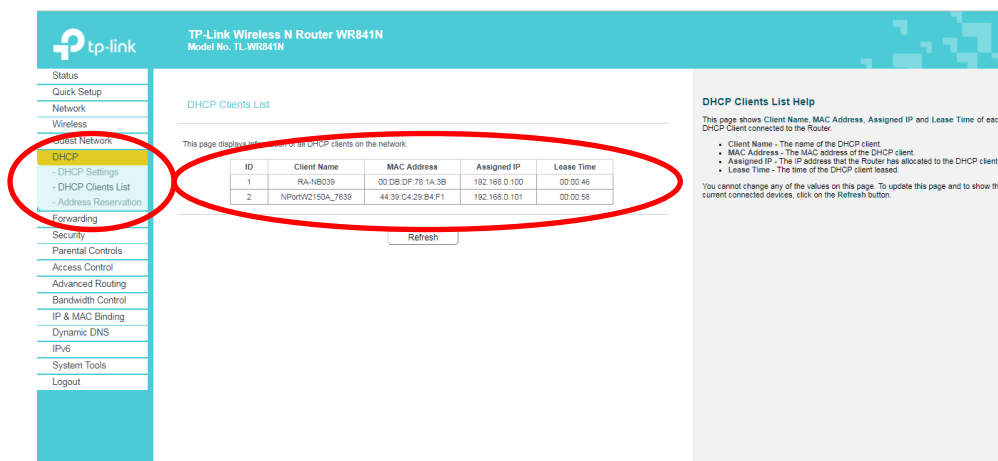
# Search IP address from Moxa module in TP-Link

- Turn on the “RAVAS” router
- Turn on Moxa Module
- Connect a pc to the “TP-Link” (Ravas) router
- Open a web browser and browse to 192.168.0.1  
Username = admin  
Password = admin



- On the left taskbar press “DHCP” and press “DHCP client list”

You can see the connected devices. Look up the device and check the IP address from the Moxa module.



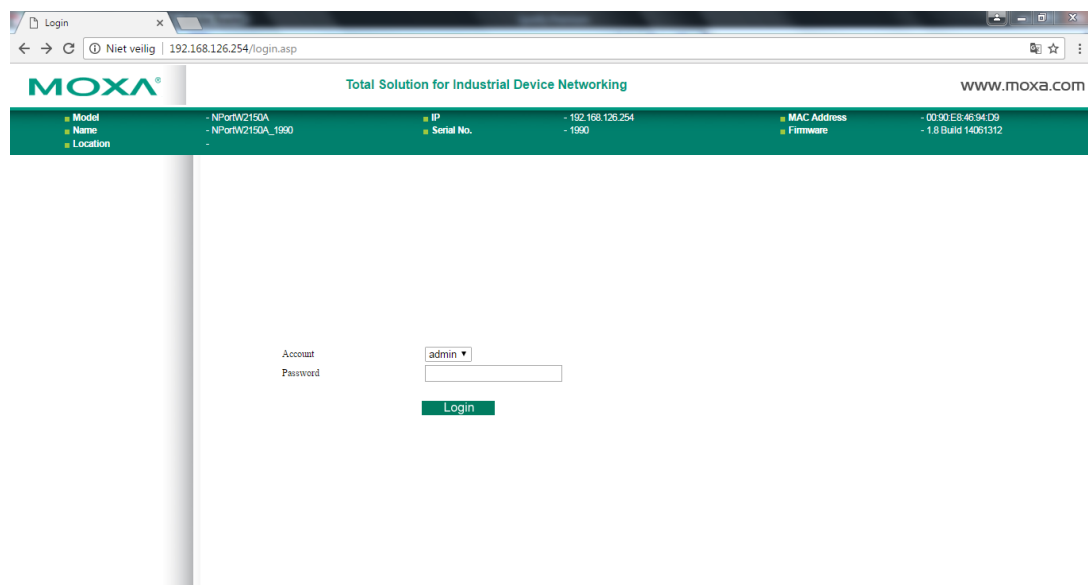
# Setup the Moxa module to the company network

- Open a web browser and navigate to the IP address from the Moxa module.

192.168.126.254 or router specified address

Account = "admin"

Pass = " "



- At the left column, click "Wizard".
- Step 1/5. set the correct ip addresses  
**IP configuration** = "Static" (specific address) or "DHCP" (router provided)  
**IP address** = the address where to communicate with MOXA module  
**Subnet mask** = Determine the range of the network  
**Gateway** = address from router/modem  
Click "Next"

MOXA®
Total Solution for Industrial Device Networking
www.moxa.com

Model	- NPortW2150A	IP	- 192.168.126.254	MAC Address	- 00:90:E8:46:94:D9
Name	- NPortW2150A_1990	Serial No.	- 1990	Firmware	- 1.8 Build 14061312
Location	-				

Main Menu
Overview
Wizard
Basic Settings
Network Settings
Serial Port Settings
System Management
System Monitoring
Restart

goahead  
WEB SERVER  
Best viewed with IE 5 above at  
resolution 1024 x 768

Step 1/5

WLAN IP Configuration

IP configuration
Static

IP address
192.168.127.254

Netmask
255.255.255.0

Gateway

Next

- Step 2/5

**Network Type:** “infrastructure” for connection with router  
“Ad-Hoc” for direct connection

**SSID:** name of the SSID where to connect

Press “Next”

MOXA®
Total Solution for Industrial Device Networking
www.moxa.com

Model	- NPortW2150A	IP	- 192.168.126.254	MAC Address	- 00:90:E8:46:94:D9
Name	- NPortW2150A_1990	Serial No.	- 1990	Firmware	- 1.8 Build 14061312
Location	-				

Main Menu
Overview
Wizard
Basic Settings
Network Settings
Serial Port Settings
System Management
System Monitoring
Restart

goahead  
WEB SERVER  
Best viewed with IE 5 above at  
resolution 1024 x 768

Step 2/5

General Properties

Network type
Infrastructure Mode

SSID
RAVAS MOXA

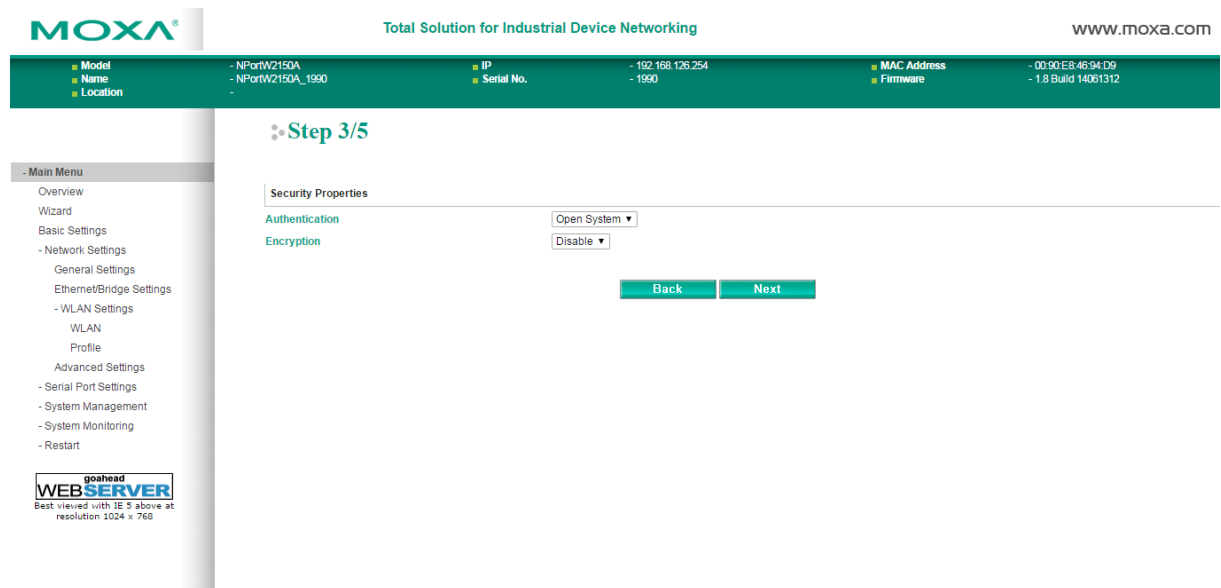
Back
Next

- Step 3/5

**Authentication:** Choose the correct authentication. WPA, WPA2,

**Encryption:** choose the correct Encryption

Click “Next”

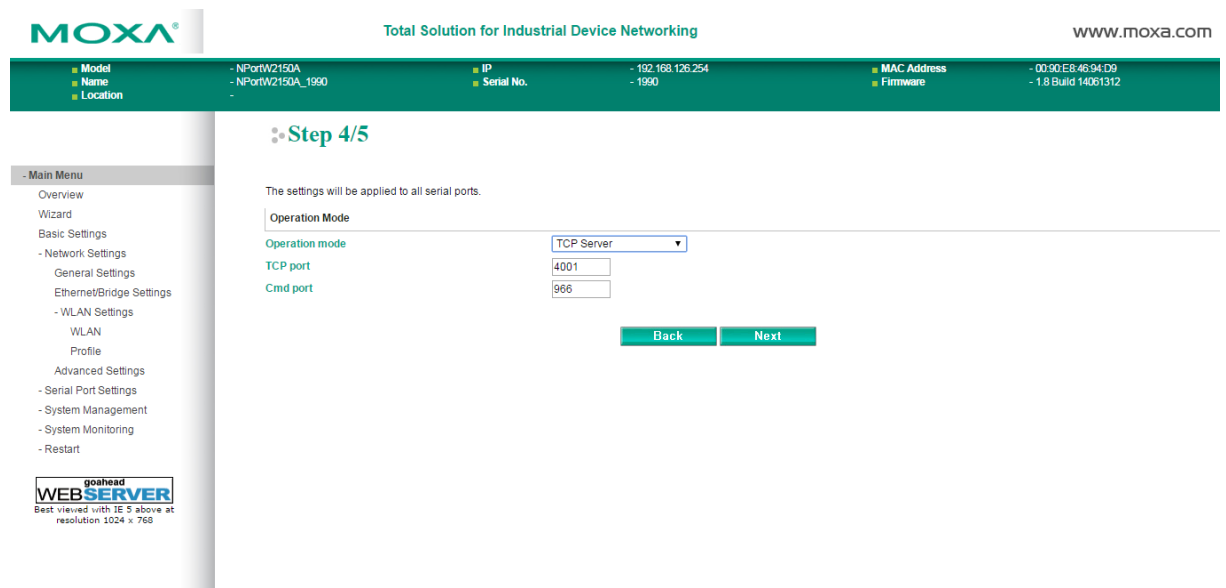


- Step 4/5

**Operation Mode = TCP Server**

**TCP port = the port where to communicate with (standard 4001)**

Click “Next”



- Step 5/5

Configure the settings as the screenshot below

Click “Next”



MOXA®

Total Solution for Industrial Device Networking

www.moxa.com

Model

Name

Location

- NPortW2150A

- NPortW2150A\_1990

-

IP

Serial No.

- 192.168.126.254

- 1990

MAC Address

Firmware

- 00:90:E8:46:94:D9

- 1.8 Build 14061312

Step 5/5

The settings will be applied to all serial ports.

Alias

Baud rate

Parity

Data bit

Stop bit

Flow control

FIFO

Interface

Indicator

9600

None

8

1

None

Enable

RS-232

Back

Next

- Main Menu

Overview

Wizard

Basic Settings

- Network Settings

General Settings

Ethernet/Bridge Settings

- WLAN Settings

WLAN

Profile

Advanced Settings

- Serial Port Settings

- System Management

- System Monitoring

- Restart

goahead

WEB SERVER

Best viewed with IE 9 above at resolution 1024 x 768

- press “Submit” at the bottom of the page

MOXA®

Total Solution for Industrial Device Networking

www.moxa.com

Model

Name

Location

- NPortW2150A

- NPortW2150A\_1990

-

IP

Serial No.

- 192.168.126.254

- 1990

MAC Address

Firmware

- 00:90:E8:46:94:D9

- 1.8 Build 14061312

IP configuration

static

IP address

192.168.127.254

Netmask

255.255.255.0

General Properties

Network type

Infrastructure Mode

SSID

RAVAS

Security Properties

Authentication

Open System

Encryption

Disable

Operation Mode

Port 1

Operation mode

TCP Server

TCP port

4001

Cmd port

966

Serial Parameters

Alias

Indicator

Baud rate

9600

Parity

None

Data bit

8

Stop bit

1

Flow contro

None

FIFO

Enable

Interface

RS-232

Back

Submit

- Main Menu

Overview

Wizard

Basic Settings

- Network Settings

General Settings

Ethernet/Bridge Settings

- WLAN Settings

WLAN

Profile

Advanced Settings

- Serial Port Settings

- System Management

- System Monitoring

- Restart

goahead

WEB SERVER

Best viewed with IE 9 above at resolution 1024 x 768

- Restart the module. *While restarting the module, take out the LAN cable to activate the WLAN connection.*