

RAVAS



Quick Guide RCS Hy-Q-52

Questions? Contact your dealer,
or go to: www.ravas.com

The main screen display shows the following elements:

- Weight indication:** Large digital display showing 374 kg Net.
- Speed indication:** A horizontal bar graph labeled 'Speed' with a scale from 0 to 50.
- Active ID's + Custom ID entry:** A list of IDs: ID 1: dirk, ID 2: 2168036, ID 3: -, ID 4: cola.
- Show/hide buttons:** Navigation buttons including left and right arrows, a sum button (Σ), and a tare button ($\rightarrow T \leftarrow$).
- Scroll through button menu:** A row of buttons for menu navigation.
- Add weight to active total + print:** A button labeled $\rightarrow 0 \leftarrow$.
- Manual tare:** A button labeled $\rightarrow T \leftarrow$.
- Manual zero:** A button labeled $\rightarrow 0 \leftarrow$.
- Overload indicator:** A vertical bar graph labeled 'LOAD'.
- Error message display:** A text area showing 'TOO FAST'.
- Active tare + preset-tare entry:** A text area showing 'TARE : pellet' and 'TOTAL : Total B'.
- Active total + Total memory selection:** A text area showing 'TOTAL : Total B'.

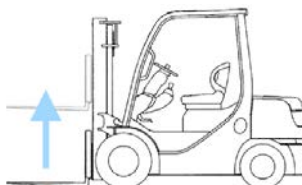
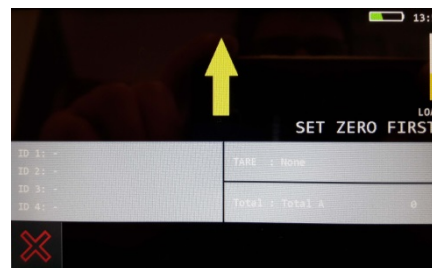


On/Off switch

USB input
(not in use)

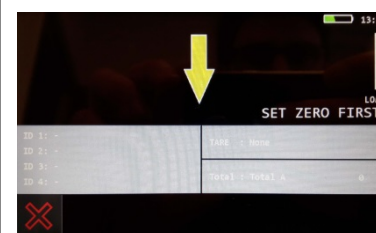


1



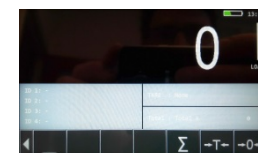
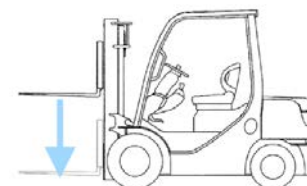
Lift empty forks
with constant
speed.
Only on the first
startup of the day.
Otherwise press X.

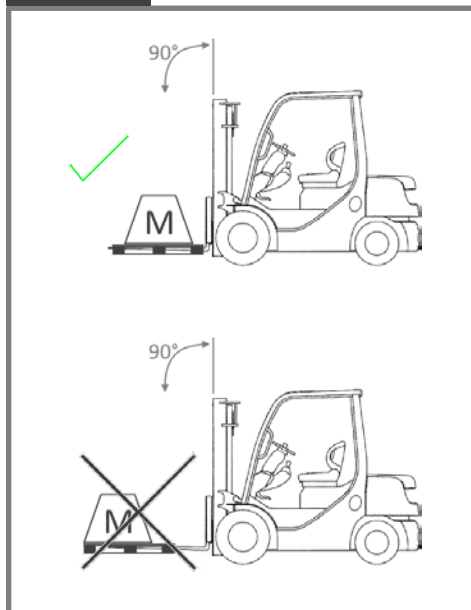
2



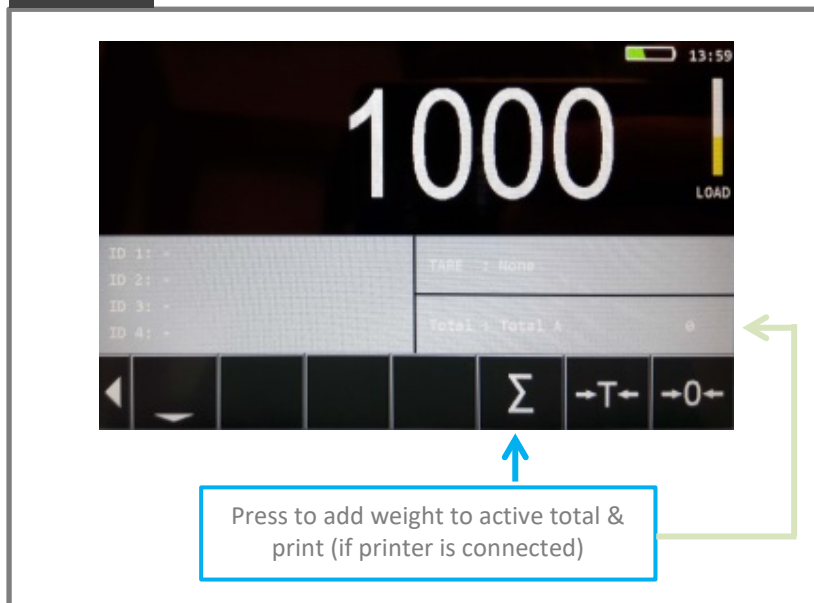
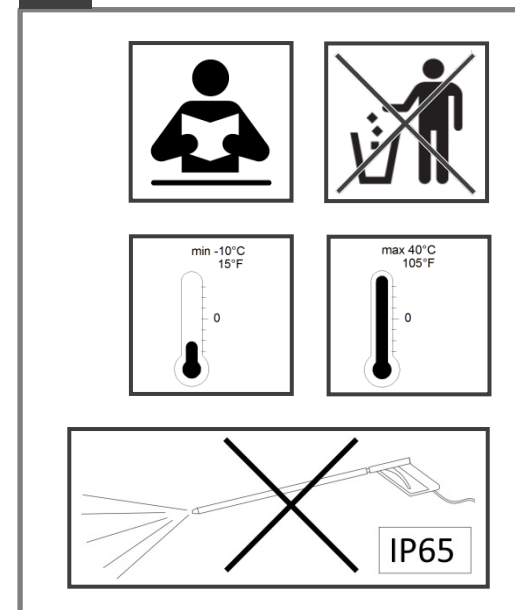
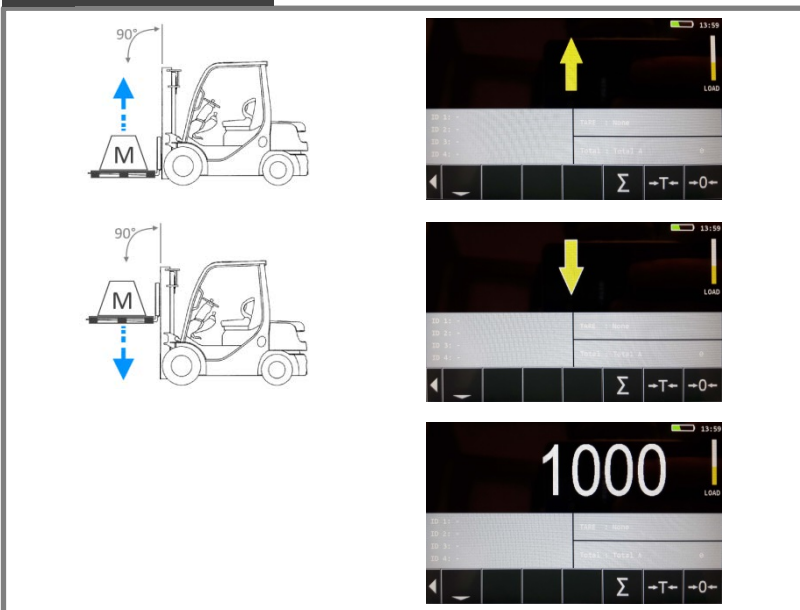
Lower empty
forks.

Indicator will
show zero and
is ready for use.





Weighing



Safety

Important Safety Instructions

- All safety regulations that apply to the truck remain valid and unchanged.
- No weighing operations are allowed if any persons or objects are in the vicinity; around, under or close to the load.
- Any modifications done to the system must be approved in writing by the supplier, prior to any work being completed.
- It is the sole responsibility of the purchaser to train their own employees in the proper use and maintenance of this equipment.
- Check the accuracy of the scale on a regular basis to prevent faulty readings.
- RAVAS is not responsible for errors that occur due to incorrect weightings or inaccurate scales.

Warning

- Only trained and authorized personnel are allowed to service the scale.
- Always follow the operating, maintenance and repair instructions of the truck and ask the supplier when in doubt.

