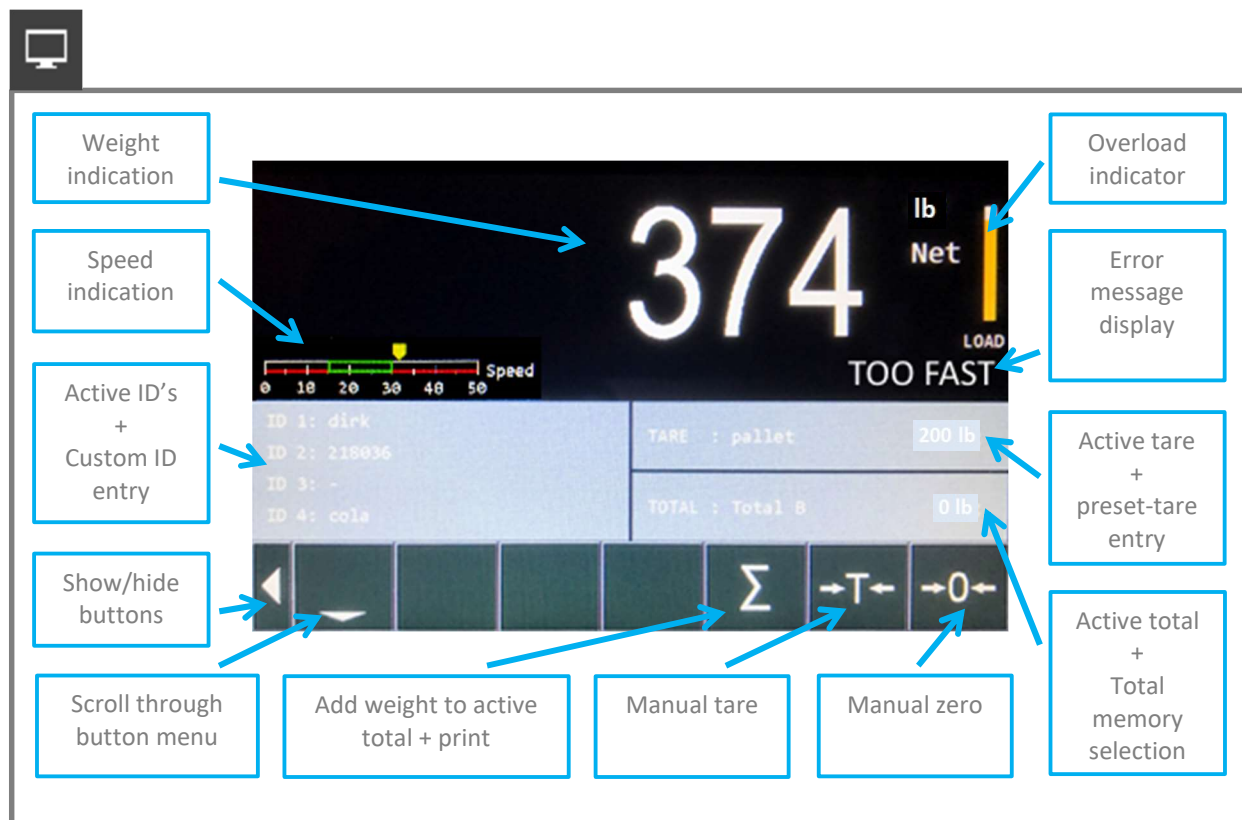


RAVAS



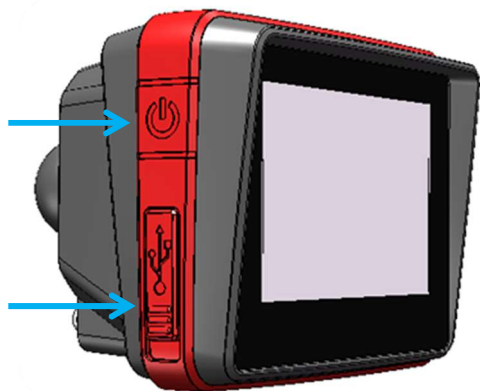
Quick Guide RAVAS RCS Hy-Q-52

Questions? Contact your dealer,
or go to: www.ravas.com

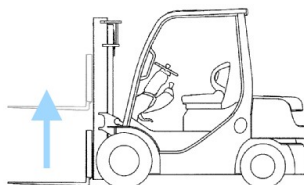


On/Off switch

USB input
(not in use)



1



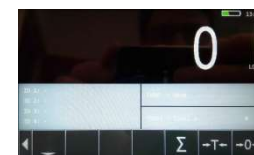
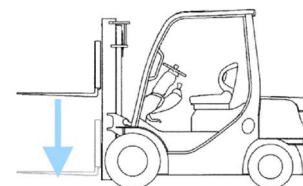
Lift empty forks
with constant
speed.
Only on the first
startup of the day.
Otherwise press X.

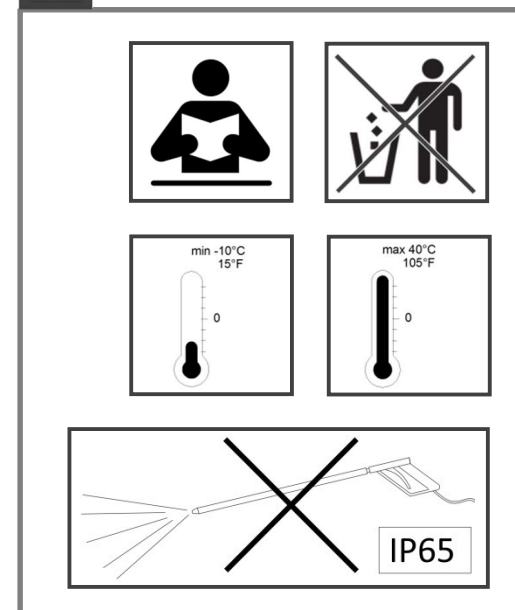
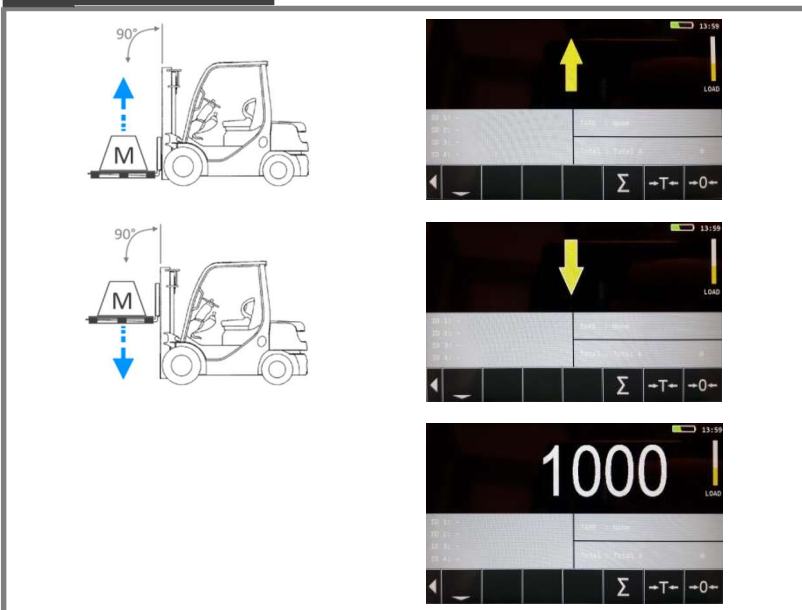
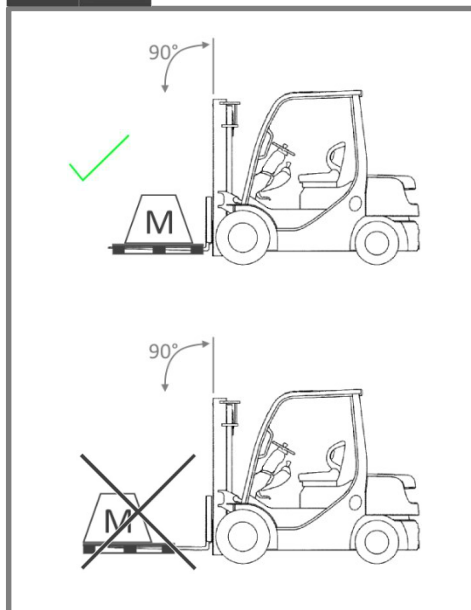
2



Lower empty
forks.

Indicator will
show zero and
is ready for use.





Safety

Important Safety Instructions

- All safety regulations that apply to the truck remain valid and unchanged.
- No weighing operations are allowed if any persons or objects are in the vicinity; around, under or close to the load.
- Any modifications done to the system must be approved in writing by the supplier, prior to any work being completed.
- It is the sole responsibility of the purchaser to train their own employees in the proper use and maintenance of this equipment.
- Check the accuracy of the scale on a regular basis to prevent faulty readings.
- RAVAS is not responsible for errors that occur due to incorrect weightings or inaccurate scales.

Warning

- Only trained and authorized personnel are allowed to service the scale.
- Always follow the operating, maintenance and repair instructions of the truck and ask the supplier when in doubt.

